

Your Past, Present and Future

Chapter Meetings are generally held on the third Tuesday of the month and include networking hour, technical presentation and dinner.
Board meetings are regularly held on the first Tuesday of the month.

09/18/18 Architectural Scavenger Hunt
10/16/18 Insulated Concrete Forms
11/27/18 Where the Roof Meets the Wall
12/07/18 Holiday Party
01/15/19 Code Jeopardy
02/19/19 Spray Fireproofing
03/19/19 Residential Building Permitting
04/16/19 Construction's Skilled Labor Shortage
05/21/19 Holy Name Turbine
06/18/19 Braveheart's Baseball Outing
07/26/19 Construction Industry Summer Open

Inside this Issue:

Worcester Board Directory
President's Message
A 270 Foot Tall Wood Framed Building?
Chapter Board Notes
Insulated Concrete Form (ICF)
Membership Update
CSI Northeast Region Conference
This Month's Program: Where the Roof Meets the Wall
CSI 2018 Audacious Holiday Extravaganza

Thank You to Our Sponsors:

Antonelli Construction
Camosse Masonry Supply
Crawford Truck
Dixon Salo Architects
Grove Products
Marsh McLennan Agency
The Garland Company
M H Specs LLC
Sterling Concrete
Spectrum Enterprises
Worcester Truck Body
Sunbelt Rentals

This Month's Chapter Meeting:

PROGRAM: Where the Roof Meets the Wall

This month's program will be an interactive panel discussion with all the involved disciplines (designer, suppliers and contractors.) It will review the design objectives for various configurations of the roof/wall interface. Detailing concepts for the integration of water, air, vapor and thermal barriers across difficult transitions will be discussed. The practical limitations and responsibilities for field execution along with the consequences of inadequate detailing and incompatible system selections will be explored.

The program is has been approval by the AIA for 1 HSW continuing education credit.

WHEN: Tuesday November 27th, 2018

5:00 – Meet and Greet

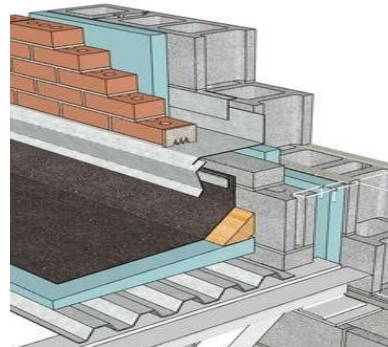
5:30 – Program

6:30 – Dinner

WHERE: Leo's Ristorante 11 Leo Turo Way Worcester, MA 01604

COST: Program: Free Dinner: \$20 (students free)

RSVP: neregcsi@gmail.com



OUR PANELISTS:

- **Christopher Paszko, P.E.**, Director, Building Envelope Sciences Group, Gorman Richardson Lewis Architects
- **Joe Iaccarino**, Project Manager, Rockwell Roofing
- **Mark Hogan**, Project Superintendent, Fontaine Bros., Inc.
- **Marty Helly**, Architectural Specifications and Building Materials Consultant, MH Specs, LLC
- **Paul Muller**, Regional Manager, Sika Sarnafil New England

(Panelist bios are on page 6)

Worcester CSI Board

President: Stephen VanDyke, CSI

Nault Architects, Inc.
Worcester, MA 508.755.6134
steve@naultarchitects.com

Treasurer: Michael Lapomardo, Jr., CSI, CDT

Antonelli Construction Co., Inc.
Worcester, MA 508.753.7436
tevy@townisp.com

Secretary: Michael Sheehan, CSI

Sterling Concrete
North Oxford, MA 978.422.8282
msheehan@sterlingconcrete.net

Chapter Director: Neil Dixon, RA, CSI, CDT

Dixon Salo Architects, Inc.
Worcester, MA 508.755.0533
ndixon@dixonsaloarchitects.com

Chapter Director: Roland M. Barrett, CSI

Milford, MA 508.478.3192
barrettr@comcast.net

Chapter Director: Peter Caruso, RA, CSI, AIA, LEED AP

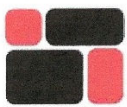
Lamoureux Pagano & Associates, Inc.
Worcester, MA 508.752.2831
pcaruso@lamoureuxpagano.com

Chapter Director: Martin J. Helly, CSI, CDT

MH Specs LLC
Florence, MA 413.586.7769
martyhelly@verizon.net



21 Adams St – Worcester, MA 01604
COMMERCIAL – INDUSTRIAL – CONSTRUCTION MANAGEMENT
RENOVATIONS – NEW CONSTRUCTION – DESIGN BUILD
Michael Lapomardo, CSI, CDT Mark Lapomardo, CSI
Telephone: 508-753-7436 Email: admin@antonelliconstruction.com

**Camosse**
masonry supply

Concrete Blocks
Bricks
Pavers
Masonry Supplies
Landscaping Masonry

e-mail: hcamosse@camosse.com

61 Southwest Cutoff Worcester MA 01604 Ph 755-6193 Fax 792-5672



From the President's Desk:

Stephen VanDyke, CSI, CDT, NCARB

Recently I had an opportunity to speak to students in WPI's architectural engineering program about the benefits of CSI, with Marty Helly, Worcester Chapter board member and President of the Northeast region. I was surprised by the number of students that came to hear our presentation, and equally surprised by the level of interest they held. The evening reminded me of my own introduction to CSI, which was an invitation by my Structures professor at Syracuse to attend a CSI meeting and see what it was all about. I went and enjoyed the program, and well, the rest is history as they say. But I wonder if I'd be involved in CSI, were it not for that initial introduction to the organization back when I was a student.

This month I want to ask the readers to consider reaching out to a younger professional and inviting them to attend a meeting. Maybe a relative studying an applicable field in College, a junior staff member around the office, or maybe one of the younger folks who came to that lunch-n-learn you gave last week. Most times, that outreach of a personal invitation can be the difference that motivates someone to come out for the event rather than skimming a flyer or an email. Let them know there's an opportunity to network and make connections. Let them know the technical program is sure to increase their knowledge in a hands-on, interactive way. Be sure to let them know that the program is free, and the Chapter comps the meals for students.

And if you don't have anyone to invite, make time to talk with any new, young professionals you see at the program. We were all new members at one point, so think back to your own reception at that first meeting, and recall how awkward it may have felt to know nobody in the room but how having a person or two start up a conversation with you made all the difference. You may be surprised that networking and connecting with the younger generation has more value than you'd expect. Ask about trends their faculty are teaching in design class, what new software are they using in school, and what their current vision of the profession is. Kids these days have never known a time without sustainability, BIM modeling and 3D rendering and may even know more about those topics than you do.

Our next event will be a panel discussion about the difficult details where the roof meets the wall, November 20. Check out the flyer at the back of the newsletter for the complete details, and reach out and invite someone.



2176 Main Street – Lancaster, MA 01523
www.crawfordtruck.com 800-427-7404



Simon Braune, Grove Products, Inc.

PO Box 240 17 Marguerite Avenue
Leominster, Massachusetts 01453
1(800)72-Grove * Fax (978)840-4130
sbraune@groveproductsinc.com



INSURANCE

100 Front Street – Suite 800
Worcester, MA 01608
T: 888-850-9400 F: 508-852-8600



A 270 Foot Tall Wood Framed Building?

In 2015 the International Code Council formed an Ad Hoc Committee on Tall Wood Buildings to explore code changes to permit larger structures than currently allowed to be constructed of mass timber framing.



The committee recommended 14 code changes for approval:

- IBC Section 602.4 Type IV construction (G108-18)
- IBC Section 703.8 Tested noncombustible protection contribution (FS5-18)
- IBC Section 722.7 Calculated noncombustible protection contribution (FS81-18)
- IBC Section 703.9 Sealing of adjacent mass timber elements (FS6-18)
- IBC Section 718.2.1 Fireblocking materials (FS73-18)
- IBC Section 403.3.2 High rise sprinkler water supply (G28-18)
- IFC Section 701.6 Owner's responsibility (F88-18)
- IFC Section 3314.7 Fire safety during construction (F266-18)
- IBC Table 504.3 (G75-18)
- IBC Table 504.4 (G80-18)
- IBC Table 506.2 (G84-18)
- IBC Section 3102.3 Special construction (G146-18)
- IBC Appendix D Fire Districts (G152-18)
- IBC Sections 508.4.4.1 and 509.4.1.1 Fire barriers at separated occupancies and incidental uses (G89-18)

A few of these in more detail:

- Creation of new Construction Types in Table 602.
- Type IV-A where the Mass Timber is protected with noncombustible material.
- Type IV-B where a limited amount of exposed mass timber elements are allowed.
- Type IV-C where mass timber is permitted to be unprotected.



Martin J. Helly Jr.

Architectural Specifications
Building Material Consulting
Worldwide from Florence, MA
413.586.7769
marty@mhspecs.com

Michael Sheehan Sales	STERLING CONCRETE
Plants Sterling - Oxford	10 Sterling Way P.O. Box 786 North Oxford, MA 01537
	978-422-8282 Cell 774-329-9166 Fax 508-731-6180 Toll Free 877-422-8282 msheehan@sterlingconcrete.net www.sterlingconcrete.net

We can put your logo on just about anything!




T: 508-752-4400 www.spectrum92.com

**WORCESTER
TRUCK BODY**



323 Southwest Cutoff - Worcester, MA 01604

Bill Sharp, President 508-752-2313

 SUNBELT RENTALS	
1-800-NO-SWEAT	
Branch # 290 800 Hartford Turnpike Shrewsbury MA, 01545	Branch # 292 254 SW Cutoff Worcester MA, 01604

A 270 Foot Tall Wood Framed Building?

(cont.):

Changes to the Allowable Building Heights in Table 504.

- Type IV-A buildings up to 270 ft sprinklered and 120 ft nonsprinklered
- Type IV-B buildings up to 180 ft sprinklered and 90 ft nonsprinklered
- Type IV-C buildings up to 85 ft sprinklered and 65 ft nonsprinklered.
- This would include A, B, E, F, M, S, U, I-4 and R Occupancies. More restrictive requirements would apply for other occupancies.

You can find more detail on the committee activities

here: <https://www.iccsafe.org/codes-tech-support/cs/icc-ad-hoc-committee-on-tall-wood-buildings/>

There were Public Comment Hearings at the ICC Annual Conference in Richmond Oct. 21 to 29. This is being followed up by an Online Governmental Consensus Vote that will determine if these provisions move on to be included in the 2021 International Building Code.

Despite the back-up and documentation for these provisions that I've seen, this still makes me uncomfortable. As was noticeable from the project looming over the walkway immediately adjacent to the convention center at CSI's convention in Long Beach, we already have construction teams stretching the limits of Type V construction and building wood framed structures to 75 feet on top of concrete podiums in urban areas. Do we need to go even taller and more dense with combustible members to support the timber industry? What will it take for us to learn the lessons from building fires of the past?



Chapter Board Notes:

The Board met on October 2nd at Reunion Tap and Table in Grafton.

We confirmed that the Worcester Foundation will give us a presentation at the November Meeting to further discuss our Scholarship Investment Options.

Our October Meeting was filled last minute, after a cancellation, by an Insulated Concrete Form Program hosted at the Sterling Concrete Plant in North Oxford. You can read about this in greater detail in the November Newsletter.

Our November Program, Nov 27th “Where Roof Meets the Wall”, has been organized by Marty and Pete and is ready to go.

The Annual Holiday Party, Dec 7th at Leo’s Ristorante, will feature a comedian, dinner and a Yankee Swap.

Our future monthly Programs were discussed and are scheduled through March, along with our annual Braveheart’s Outing and the Golf Tournament.

We agreed to make a better effort at asking guests at events if they would like to volunteer for photos, articles or anything else that might create an interest to participate in our group.

Mike S should begin forwarding Mike H a summary, such as this, of Board Notes that can appear in the Newsletter. Terri will be reaching out to Marty to see how she can be of help to the Worcester Chapter.

As always, we would ask if you have any interest in exploring our organization, please reach out to anyone on the Board. Aside from monthly meetings, if you would like to attend a Board Meeting as a Guest, we will arrange it. We appreciate your ideas and involvement.

Excerpted from minutes prepared by Chapter Secretary Mike Sheehan

Insulated Concrete Forms (ICF)

On Tuesday, October 16th, Joe Harnois, from Atlantic Builders Supply, gave our group a hands-on ICF demonstration at the Sterling Concrete Plant in North Oxford, followed by a presentation at J Anthonys Restaurant. At the concrete plant, we were able to examine and handle ICF Blocks and then see how they are joined together. Sterling Concrete provided a mixer truck and concrete to simulate the delivery of mix into the form to a group of about 26 people.

With Joe’s almost 30 years of experience as a contractor and an end user of ICF, his presentation was informative and very interesting. He blamed the ICF Industry itself for not promoting the benefits of ICF as a better alternative for a building envelope. The material acts as a concrete form, which once the concrete is in place, now provides an insulated wall that is ready to receive exterior and interior finishes. Additionally he covered key items such as fire resistance, sound attenuation and thermal insulation.

It’s interesting to see, once a program has ended, how quickly people tend to leave. In this case, I noticed many people remained to talk about the topic and to chat with the many people they met that evening. At J Anthony’s the Italian buffet did not disappoint and complimented a very good program.

Remember, WCCSI is a diverse group of likeminded individuals, who enjoy learning and socializing....whatever discipline of construction they represent. Please consider joining us.



Membership Update:

There are literally no changes to report this month.

We didn't lose anyone, didn't gain anyone, and nobody had a renewal date in October with the exception of Henry Camosse. Henry was proactive enough even after 27 years of membership to renew ahead of time. We already noted his renewal in last month's newsletter.

So while we have no change, that's not all good. To be an effective organization, we need to be growing (and reporting on NEW members.) While you're thinking about it, invite someone to join you in attending this month's program on the critical details of roof and wall systems.

Let's share the CSI experience.

CSI Northeast Region Conference:

Save the Date: May 30 to June 1, 2019

The CSI Northeast Region Conference is coming to Hartford; a chance to grow your business and advance your career. The technical program will focus on the Challenges of Cold Weather Construction – something that affects all of us here in the Northeast. Jointly hosted by the Housatonic and Hartford Chapters, the conference provides two full days of networking, education, leadership development, and a little food and fun mixed in. Conveniently located in Hartford at the center of the Northeast Region. Mark your calendar now and make plans to take advantage of this CSI event.

This Month's Chapter Meeting (cont.):

Christopher Paszko, P.E.

Director, Building Envelope Sciences Group Gorman Richardson Lewis Architects

Chris is responsible for managing all aspects of the firm's building envelope projects, spanning commercial, residential, academic, and institutional structures, both historic and contemporary. Chris has over a decade of experience in building envelope sciences and his expertise includes investigation and repair of existing failed and deteriorated systems, new design work, design consulting and commissioning. He is versed in all building envelope components, particularly masonry, flashings, roofing, waterproofing, windows and façade systems.

Joe Iaccarino

Project Manager - Rockwell Roofing

Receiving an Architectural Engineering degree from Wentworth, Joe has been associated in the construction industry since 1976 and the roofing industry in particular since 1980. From hands on, to estimating, to project management, Joe has a wide range of experience that makes him such a valuable source of information.

Mark Hogan

Project Superintendent - Fontaine Bros., Inc.

Mark's experience in the construction business spans 33 of which 30 have been with Fontaine Bros. Currently a Project Superintendent, Mark's responsibilities include overseeing the construction site and coordinating daily activities of all the trades in order to build a project within the scheduled timeframe. Mark takes great pride and enjoyment in bringing a Designer's thoughts to life for an Owner to use for years to come.

Marty Helly

Architectural Specifications & Building Materials Consultant MH Specs, LLC

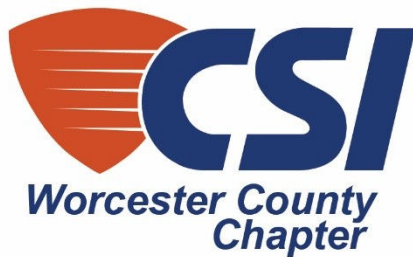
Marty is a recognized expert in construction specifications. He has over 35 years of experience in the design and construction field. Marty passed the Certified Construction Specifier exam in 1985 and the Architectural Registration Exam in 1986. He has literally written specifications on hundreds of projects around the world.

Paul Muller

Regional Manager - Sika Sarnafil New England

Paul has been with Sarnafil for over 25 years and roofing experience over 30 years in the New England area.





WHERE THE ROOF MEETS WALL: A PANEL DISCUSSION

WHEN: Tuesday November 27, 2018
5:00 – Networking
5:30 – Program
6:30 – Dinner

WHERE: Leo's Ristorante
11 Leo Turo Way
Worcester, MA 01604

COST: Program: Free
Dinner: \$20 (students free)

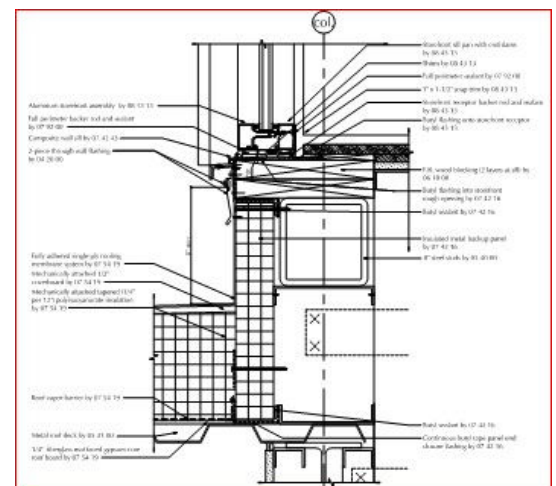


Roof-to-exterior wall transitions can present complex detailing challenges. They tend to be project-specific, with varying configurations and limitations. They are the junction of multiple systems. The materials are supplied and installed by numerous separate manufacturers and subcontractors. They are subjected to the greatest structural, thermal, wind and moisture conditions of any point on the building. Proper detailing and construction are critical to the performance of the building envelope.

This presentation will be an interactive panel discussion with all the involved disciplines (designer, suppliers and contractors.) It will review the design objectives for various configurations of the roof/wall interface. Detailing concepts for the integration of water, air, vapor and thermal barriers across difficult transitions will be discussed. The practical limitations and responsibilities for field execution along with the consequences of inadequate detailing and incompatible system selections will be explored.

The program is approved by the AIA for 1 LU/HSW continuing education credit. After participating in this program, attendees will be able to:

1. Understand the complexities and design issues in transitions from the roof to the wall systems.
2. Determine who is responsible for the continuity of installed air, water, vapor, and thermal barriers.
3. Explore the consequences of inadequate detailing and incompatible system selection.
4. Develop strategies to address transition issues and prevent envelope failures.



So, come join Worcester County CSI for an informative panel discussion and become acquainted with one of the more difficult areas of a building.

Please RSVP to Terri Bracken at neregcsi@gmail.com

CSI 2018 Audacious Holiday Extravaganza

WHEN: Friday December 7, 2018

5:30 – Meet & Greet

6:30 – Entertainment

7:15 – Dinner

8:00 – Yankee Swap

WHERE: Leo's Ristorante

11 Leo Turo Way

Worcester, MA 01604

COST: \$35 Per Person



December is the time of year that we take a break from our typically awesome monthly educational programs to host our annual audacious Holiday Social. Join us with your spouse or significant other at Leo's Ristorante on Shrewsbury Street, for a great night you'll never forget. This year's program includes:

Dinner: The evening includes a delicious buffet dinner, cash bar, good company and we will feature a sing along (requested by Patty Lapomardo) by none other than Leon Redbone with his rendition of "Christmas Island".



Comedy by Shawn Carter. Entertainment by Boston based stand-up comic Shawn Carter. Shawn is a writer and host of the UnScene Comedy Podcast and Sally O'Brien's Comedy Show.

A good 'old fashioned Yankee Swap. Always a highlight, our members rise to the challenge to find great gifts - from the delicious and distinguished to the bizarre - that bring out the laughter or are "the item" everyone wants to trade up to and take home. In honor of the year put on your Santa cap and keep the expense under \$18 and bring on the surprises.

